

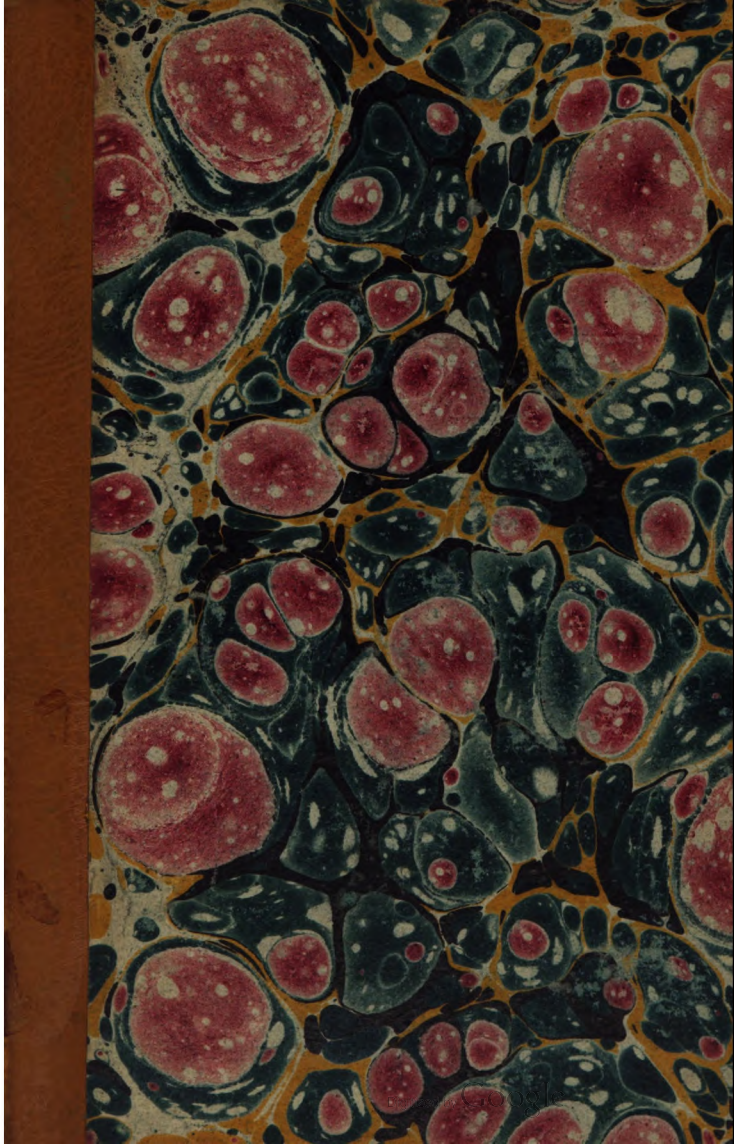
---

This is a reproduction of a library book that was digitized by Google as part of an ongoing effort to preserve the information in books and make it universally accessible.

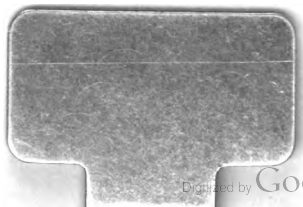
Google™ books

<https://books.google.com>





47.1508.





# HARRIS BROTHERS'

## UNIVERSAL

# POST OFFICE GUIDE;

OR,

ARRANGEMENTS OF THE GENERAL POST OFFICE, AFFECT-  
ING ALL LETTER WRITERS AND RECEIVERS;

**Instructions for Posting Letters, &c. to all parts of the World;**

WITH INFORMATION IN WHAT MANNER LETTERS AND NEWSPAPERS ARE  
DISPOSED OF IN THE CHIEF OFFICE IN LONDON, AND  
OTHER PARTICULARS RELATIVE TO

Money Orders  
Lost Money Orders  
Lost Money Letters  
How to draw Money Orders  
Repayment of Orders  
Safest mode of sending Valuable  
Letters  
Registration of Letters  
Registration to Foreign Countries  
Registration of Voters' Objections  
Detained Letters  
Refused Letters

Letters to Persons Removed  
Letters to Persons who cannot be  
found  
Lost Letters how to inquire for them  
Peers and Members of the Commons'  
Letters  
Petitions and Addresses to Her  
Majesty  
Letters for Foreign Countries  
What Letters are opened  
Mails, Postage, and Rates of Weight

AND

**A GENERAL MAIL GUIDE, &c. &c. &c.**

BY A LATE OFFICER OF THE LONDON ESTABLISHMENT

*Price Sixpence.*

"It had often struck him that some pains should be taken to make the main features of the Post Office System intelligible to the people."—*Rowland Hill's Speech at Liverpool, 1847.*

LONDON :

PUBLISHED BY HARRIS BROTHERS, No. 8, BUDGE ROW, WATLING STREET.

MAY BE HAD OF ALL BOOKSELLERS AND STATIONERS.

1847.

*Entered at Stationers' Hall.*



211

## PREFACE.

---

MUCH of the following information is not to be found in any Postal Directory.

It is the result of many years experience, and observation, in that gigantic establishment, the London Post Office. It may be a matter of surprise to many, why some of the information has not been officially given to the public, when so much was involved by them. Why it has not been given, is well known to the public servants in the practical part of that department. Serious and enormous losses have been sustained, and are constantly occurring, which are chiefly to be attributed to past defects in the internal arrangements and defects, which cannot be seen by the public eye, and have long been interwoven with existing interests. The following pages contain a statement of the real practice in the Post Office, it is for the public to draw their own inference, and adapt their practice to the modes of operation carried on at the establishment in such a manner as not to be losers, either by delay, or any other defect.

### THE GENERAL POST OFFICE.

1. The General Post Office in London, is in St. Martin's-le-Grand, whence about 500,000 Letters and Newspapers are daily sent out to all parts of the World, or nearly 100 tons weight per week.

Its Branch Offices are in all the Market Towns in the United Kingdom, and Villages or Hamlets, to which an aggregate number of 100 letters are despatched per week. Letters and Newspapers are sent out every evening, (except Sunday), at eight o'clock, from London, and to the following towns in the morning likewise, at nine o'clock.

### MAILS.

2. Mails are despatched and received twice a day, to and from the following Towns, with London and the Villages that surround them.—

Abingdon	Ashford	Barnsley	Bedford
Alnwick	Attleborough	Basingstoke	Belford
Ampthill	Aylesbury	Bath	Belper
Andover Road	Banbury	Battle	Berkhempstead
Arundel	Bangor	Beaumaris	Berwick

Bicester	Daventry	Kenilworth	Rickmansworth
Bilstone	Derby	Knutsford	Ripley
Birmingham	Devizes	Lancaster	Rochdale
Bishops Stortford	Dorking	Leamington	Rochester
Blackburn	Dover	Ledbury	Ross
Bognor	Downham	Leeds	Rotherham
Bolton	Dunmow	Leicester	Rugby
Boston	Durham	Leighton Buzzard	Ryde
Bourne	Dursley	Lewes	Rye
Brackley	Ely	Liverpool	Saffron Walden
Bradford, Yorksh.	Emsworth	Loughborough	Sandbach
Brandon	Esher	Lynn	Saxmundham
Brentwood	Exeter	Macclesfield	Seven Oaks
Bridgewater	Fareham	Maidenhead	Sheerness
Brighton	Farnham	Maidstone	Sheffield
Bristol	Farringdon	Manchester	Shiffnall
Buckingham	Felton	Margate	Shoreham
Burnley	Fenny Stratford	Market Deeping	Shrewsbury
Bury St. Edmunds	Feversham	Maryport	Sittingbourne
Cambridge	Folkstone	Melton Mowbray	Slough
Canterbury	Gateshead	Milnthorpe	Southampton
Carlisle	Gloucester	Mold	South Shields
Carnarvon	Godalmin	Monmouth	Spalding
Chatham	Gosport	Morpeth	St. Albans
Chelmsford	Grantham	Nantwich	St. Asaph
Cheltenham	Gravesend	Newcastle on Tyne	St. Ives
Chepstow	Guernsey	Newmarket	St. Leonards
Chester	Guildford	Newport, I. of W	Stafford
Chesterfield	Halifax	Newport Pagnell	Stamford
Chippenham	Harlow	Northampton	Staplehurst
Chorley	Hastings	North Shields	Stockport
Chichester	Havant	Nottingham	Stone
Cirencester	Hemel Hempstead	Norwich	Stony Stratford
Clitheroe	Hereford	Oundle	Stratford-on-
Cobham	Hertford	Oxford	Avon
Cockermouth	Higham Ferrars	Penkridge	Stroud
Colchester	Hoddesdon	Penrith	Sunderland
Congleton	Holyhead	Peterboro	Swindon
Conway	Holywell	Portsmouth	Taunton
Coventry	Huddersfield	Preston	Tetbury
Cowes	Huntingdon	Preston Brook	Thetford
Crewe	Hythe	Pwlheli	Thirsk
Cranbrook	Ipswich	Queenboro	Thrapstone
Cuckfield	Jersey	Ramsgate	Tiverton
Darlington	Kelvedon	Reading	Towcester
Dartford	Kendal	Reigate	Tring



Tunbridge	Warwick	Wigton	Wootton-under-
Tunbridge Wells	Watford	Winchester	Edge
Ulverstone	Wednesbury	Windsor	Wymondham
Uxbridge	Weedon	Witham	Yarmouth
Wakefield	Wellingboro	Woburn	York
Wallingford	Wellington, Salop	Wolverhampton	----
Walsall	Wellington, Som.	Woodbridge	
Wansford	West Bromwich	Workington	All Ireland
Ware	Whitehaven	Worthing	All Scotland
Warrington	Wigan		

### POST OFFICES IN THE COUNTRY, AND LETTER RECEIVING HOUSES IN LONDON.

3. At Country Post Offices and Receiving Houses kept by Tradesmen in various parts of the Metropolis (notices of which are affixed upon the gas posts) letters and newspapers can be posted for all parts of the world at all times between 7 in the morning and 10 at night, except on Sundays, when the boxes close in the country post towns during divine service.

### TIME WHEN THE BOXES CLOSE IN LONDON AND COUNTRY POST TOWNS, FOR PARTICULAR, OR DAILY MAILS.

4. Letter boxes at the tradesmen's shops in London, three miles round the General Post Office, are emptied of newspapers in the morning at 7 o'clock to go by the mails at 9 o'clock, and of letters at a quarter to 8, and in the evening of newspapers at 5 o'clock, and of letters for the evening mails at half-past 5. Any letters or papers posted after those times are detained as "too late," those of the morning until evening despatch, and most of the "late ones" in the evening until the evening following. In the country post offices throughout England the boxes close at a convenient time to make up the bags to meet the passing London mail, and which time is regulated by the town clocks, and can be best ascertained in the localities. When the boxes close for a particular mail another is opened with the words "too late" upon it, and letters dropped into that box will go by the next mail.

### "TOO LATE" LETTER AND NEWSPAPER FEES.

Letters if prepaid can be sent after the generality of receivers have closed their boxes when posted at the following offices in London, and by affixing an extra penny stamp.

Charing Cross.....	}	Until $\frac{1}{4}$ to 7 o'clock.
Borough, and .....		
Old Cavendish St ....		
Lombard Street .....	}	Until 7 o'clock.
and		
General Post Office...		

And at the Chief Office in St. Martin's-le-Grand until 7:30 on paying sixpence and the postage. Newspapers half-penny each if posted between six and half-past seven in the evening. At country Post Offices such as Manchester the late fee is 1d. if posted within half-an-hour after the regular box has closed, and sixpence the next quarter-of-an-hour before the particular bag is made up.

#### WHEN LETTERS ARE DELIVERED.

5. General Post Letters, or letters from all parts of the United Kingdom, and from abroad, are now delivered in London by the General and Local Post Letter Carriers, in the morning between 8 and 10 o'clock, and in the afternoon between 3 and 5 o'clock, and in most of the country towns about the same time in the morning.

#### LETTERS MAY BE TAKEN AWAY.

6. By command of the Postmaster General letters may be taken away by the letter carriers when persons are not in readiness to receive them, or when parties refuse them, not being prepared with the means of paying the postage, or not properly authorized to take them in. Moreover, if there are no means of delivering paid letters, such as the want of a letter box, in such cases the letter carrier is to take them back to the post office to be sent out by another opportunity.

#### LETTERS ARE NOT TO BE DELIVERED IN THE STREETS.

7. Letter carriers are not allowed to deliver any letters in the streets, except to such persons as are personally known to them, nor are they to be delivered to the clerk, or servant of any person, unless the letter carrier is satisfied that such clerk, or servant, is authorized to receive them.

## LETTERS LEFT AT CLUB HOUSES, HOTELS, OR COFFEE HOUSES, &c.

8. Letters which have been "left until called for" at club houses, hotels, and coffee houses, &c., may be returned to the letter carrier after any period not exceeding two months. If they are Foreign unpaid letters, the postage of which was paid on delivery, it will be returned when taken back to the post office.

## POSTAGE AND WEIGHT ALLOWED.

9. Postage is charged by weight on all letters passing through the United Kingdom, and to, and from the colonies at the following rates, when prepaid.

Under half an oz.		Above half an oz.		Above an oz.	
	s. d.		s. d.		s. d.
England . . .	0 1	England . . .	0 2	England . . .	0 4
Colonial . . .	1 2	Colonial . . .	2 4	Colonial . . .	4 8
Ship . . . . .	0 8	Ship . . . . .	1 4	Ship . . . . .	2 8

Foreign no uniform rate.

All letters above an ounce when prepaid are charged double rates, and for fractional parts as well. Thus, a letter which is more than an ounce must prepay twopence more for the fractional part, or when it arrives at the General Post Office, where the letters for all parts of the world are weighed, it will have a double tax of twopence put upon it if under half an ounce, and a tax of fourpence for every ounce, and every fraction which is marked "above one ounce" and charged as two.

## UNPAID LETTERS.

10. Unpaid letters are charged double postage upon delivery, and in many cases as a matter of course are refused on this account when presented by the letter carrier, who sends them to be opened, read, and returned from the Deal Letter Office to the writer, if judged of sufficient importance by the opening Clerk.

## LETTERS AND PARCELS ABOVE SIXTEEN OUNCES.

11. All letters and parcels above one pound in weight are not sent by post as addressed, but are sent to one of the Dead Letter Offices in London or the Country to be returned to the sender, except—

Petitions and Addresses to Her Majesty.

Petitions to either House of Parliament when addressed to any Member.

Maps, Reports, and other Documents to and from Public Offices.

Letters from places, or addressed to places beyond sea.

Deeds when tied up and the address pasted upon them, or Banker's Parcels given in at the Post Office.

Parliamentary Proceedings, &c.

## POSTMARKS.

12. The marks in black or blue ink on the back of the letter indicates the town where posted, and the date in the centre of the mark the time *when* received at that town. Paid letters are stamped and taxed in red ink on the front of the letters.

## LETTERS AND PARCELS WHICH PASS FREE.

13. Addresses to Her Majesty; Petitions to Members of either House of Parliament when enclosed in a cover, open at the sides like a newspaper, and under two pounds weight; all large petitions should be divided if above weight, for instance, a petition weighing nineteen pounds should be divided into ten equal parts and enclosed in ten separate open covers addressed to the same member to avoid delay and unnecessary trouble in getting the "overcharge" postage returned. Any note or letter enclosed will subject such petition to full rates of letter postage.

## PARLIAMENTARY PROCEEDINGS.

14. Printed votes, blue books, and all other printed documents of the Imperial and Colonial Legislature pass through the post office, any weight, to and from all parts of Great Britain and Ireland, and the Colonies, at the rate of one penny under four ounces, or fourpence per pound, prepaid or not, and if sent abroad "per ship" at eightpence per pound; but they cannot be sent "via Southampton," or "via France" to India under full rates of letter postage.

## STAMPS AND ENVELOPES.

15. At all the post offices in England, envelopes and postage stamps are sold, and the post office keepers are not allowed to charge any more than the following rates for them on pain of being dismissed.

Queen's heads, 1d. and 2d. each, or 1s. and 2s. per doz.

Penny envelopes, at 1s. 1½d. per doz., 6 for 6½d., or 2 for 2½d.

Twopenny ditto, at 2s. 2d. per doz., 6 for 1s. 1d., or 3 for 6½d.

Stamped half sheets, at 1½d. each, or, per quire, 2 doz. 2s. 3d.

They are sold also by stationers and booksellers, but "neither tavern keepers nor others can sell postage stamps without being duly licenced."

## STAMPS ACCIDENTALLY RUBBED OFF, OR THAT HAVE BEEN PREVIOUSLY USED.

16. Stamps which have been used once and put upon letters again subject such letters to double postage. Stamps put upon letters from the colonies are charged the same as letters without stamps. Likewise letters from which adhesive stamps have been accidentally rubbed off are treated as if posted unpaid. To make stamps stick fast dip them in water, and if the gum is too slight use a little fresh to avoid the mortification of having the letter refused or recharged.

## LETTERS FREE TO SHIP OWNERS.

17. The owners of ships, consignees, and shippers of goods in inward bound vessels, are allowed to receive letters free of sea postage to the extent of six ounces in weight. But in vessels coming from Ceylon, Mauritius, East Indies, or the Cape of Good Hope they are allowed, free, twenty ounces of letters. Parties claiming this privilege must be described as such on the letters, and any person falsely superscribing letters, with the intention of evading the postage, is liable for each offence to a fine of £10.

## SAILORS' AND SOLDIERS' LETTERS.

18. Sailors and soldiers while on service in the East Indies, the Colonies, and China, may have letters sent to them from any part of Great Britain by the "Packets," or "India Mail," at one penny the half ounce, paid when posted. Letters coming from persons in the Royal Navy, or

Army, must be signed by the Commanding Officer, and persons sending letters to them must write on the direction, the Ship or Regiment, and rank.

### POST OFFICE PRIVILEGES TO PERSONS IN HER MAJESTY'S SERVICE.

19. Non-Commissioned Officers, Captains' Stewards, Sergeants, &c., can send and receive letters, on their own private concerns, only when employed in Her Majesty's Service abroad, at the rate of one penny per half-ounce when sent in conformity with the following regulations.

#### REGULATIONS TO BE OBSERVED.

20. The name of the officer, description of his class or rank, the name of the ship or regiment to which he belongs must be written upon the letter; and if *from* a person entitled to the privilege his superior officer must sign his name, and specify the ship or regiment, and the penny must be paid when posted, and not exceed half-an-ounce in weight. Unless the foregoing description is fully written upon the face of the letters they will be charged full rates of postage, and if properly directed and the penny not paid when posted they will be sent to the Dead Letter Office to be returned to the writers. The following examples will show how letters should be addressed.

☛ To a Seaman or  
Non-Commis-  
sioned Officer  
in H. M. S.

*Mr. Thomas Jones,*

*Purser in H. M. S. Daphne,*

*Calcutta,*

*India.*

*" Via Southampton."*

*From John Mitchell, Seaman in H. M. S. Cygnet, Ceylon.*

*Captain in H. M. S. Cygnet,  
Charles Daries,  
3rd April, 1847.*


*Mr. Joseph Hill,*

*South Street,*

*Perth,*

*N. B.*

*United Kingdom.*

 A letter from a  
Soldier or Non-  
Commissioned  
Officer.

*33d Regt.  
of Foot,  
Colonel  
I. C. Wise.*


*From Henry Slee, Private in  
33d Regiment Foot.*

*To Thomas Slee,*

*14, Cold Street,*

*Edgeware Road,*

*London.*

 A Letter to a  
Soldier or Non-  
Commissioned  
Officer.

*To Henry Slee,  
Private, No. 2, 3d Detachment,  
of 33d Regiment,  
Malta,  
Or elsewhere.  
“ Via Southampton.”*

### MONEY LETTERS.

21. Coin in its transmission through the post office is liable to fall out of letters. Such money, if picked up in the London office, is given to the presiding officer; but the loser has a very remote chance of getting it unless he can give a very minute description of it.

### MONEY ORDERS.

22. Can be obtained for threepence for £2, or any sum under, and for £5 and under, at a charge of sixpence. No single order is given for sums above that amount; but larger sums can be sent in several £5 orders, which may be had of all Postmasters in England, and from many of the Receivers in London, between nine in the morning and six in the evening. But at the chief offices in Dublin, Edinburgh, and Aldersgate Street, London, and the offices three miles round it, they can only be had or paid, between ten and four.

### HOW TO DRAW MONEY ORDERS.

23. Money Orders are not granted or cashed on Sundays, neither are they cashed in London at any of the following post offices when drawn on “London only:” for instance, suppose a person in Halifax wishes to remit money with the least inconvenience to another person at 209, Oxford Street, London, when he pays the amount into the hands of the Post-



master he tells him to draw on London, as a general rule: such orders are cashed only at the chief office. But were he to advise the Postmaster of Halifax to draw on the Money Order Office at 210, Oxford Street, it would save the party to whom it was paid a walk of six miles; the same rule applies to other offices.

### OFFICES IN LONDON.

24. Offices at which orders can be made payable from any part of the United Kingdom, and to any part from London.

	LOCALITIES.	MONEY ORDER OFFICES.
For	Battle Bridge & its Neighbourhood,	at 1, Pleasant Row.
"	Bloomsbury ditto	at 1, Broad Street.
"	Borough & the neighbourhood of Southwark,	at Blackman Street.
"	Brompton and its neighbourhood,	at 5, Brompton Place.
"	Camberwell ditto	" Camberwell Green.
"	Camden Town ditto	" 98, High Street.
"	Chelsea ditto	" 79, Paradise Row.
"	City ditto	" Lombard Street, (grants orders only.)
"	Ditto ditto	" Aldersgate Street, the Chief Office.
"	Dockhead ditto	" 11, Dockhead.
"	Finsbury ditto	" 36, City Road.
"	Gray's Inn Road ditto	" 43, Upper North Place.
"	Hackney ditto	" 8, Church Street.
"	Islington ditto	" 86, Upper Street.
"	Kennington Cross ditto	" 2, Kennington Cross.
"	Kensington ditto	" High Street.
"	Kingsland Road ditto	" 4, Orchard Place.
"	Lambeth ditto	" 33, Mount Street.
"	Limehouse ditto	" 5, Three Colt Street.
"	Marylebone ditto	" Vere Street, Oxford Street.
"	Old Kent Road ditto	" 9, Northampton Place.
"	Oxford Street ditto	" 210, Oxford Street.
"	Paddington ditto	" 116, Edgeware Road.
"	Piccadilly ditto	" 65, Piccadilly.
"	Pimlico ditto	" 28, Queen's Row.
"	Ratcliffe ditto	" 77, Broad Street.
"	Strand ditto	" 180, Strand.
"	Tottenham-Ct.-Road ditto	" 103, Tottenham Ct. Road.
"	Upper Baker Street ditto	" 54, Upper Baker Street.
"	Whitechapel ditto	" No. 1, Whitechapel.

### MONEY ORDERS TO BE CASHED.

25. All money orders, when presented to be cashed, either at the London or Country Post Offices, must be signed by the person to whom it was sent, and the person presenting it must be able to state the christian and surname, residence, and business of the sender: unless these conditions are strictly complied with, postmasters can dishonour the order. Persons remitting money to strangers in the way of business through this medium should not fail at the same time to apprise them of the christian name and business, instead of merely giving the initials, which often causes delay where the postmaster strictly adheres to the letter of his instructions.

### LOST MONEY ORDERS.

26. Letters containing orders are liable to be mis-sent, mis-delivered or stolen, like other letters; but if they are not paid at the post towns or places to which they may have been sent, duplicate orders may be obtained by writing to the Secretary of the post office in London, giving the date when the first was obtained; but if they are stolen and cashed the post office gives no indemnity.

### REPAYMENT OF MONEY ORDERS.

27. No duplicate or second money order can be granted by any postmaster for payment of lost orders not cashed, or repayment of money not claimed by persons to whom it was originally sent, except under the written authority of a Secretary, either in London, Dublin, or Edinburgh, to whom all applications for transfers must be made in writing.

### LOST COIN OR JEWELS, &c.

28. Postmasters throughout the kingdom are commanded to send any coins, money, jewels, and other valuable articles which they may find in their office or letter boxes to have dropped out of letters, to the Secretary in London immediately. Applications for such missing articles should be made directly to the Secretary in London by letter, unpaid, enclosing the envelope of the letter or cover where practicable, so that the offices may be traced through which it has passed by means of the postmarks, and if it has been found in any of them, and registered, the article will be returned to the complainant per post.

## THE SAFEST MODE OF SENDING VALUABLE LETTERS.

29. The most secure way of transmitting letters of value is by registration. Letters under one pound weight can be registered at all the post offices upon paying a fee of one shilling besides the ordinary postage to any place in the United Kingdom; but such letters must be posted half-an-hour before the boxes close. A receipt, stamped with the office mark where posted, or name and date will be given as an acknowledgment to the party posting it.

## REGISTRATION TO FOREIGN COUNTRIES.

30. Letters to the continent of Europe, "via Prussia," or "via France," can be registered on the payment of one shilling as a fee through France, and double French postage, and single British, and one shilling and threepence through Belgium or Prussia, besides the regular postage, which in all cases must be paid in advance. Although registration gives the greatest security, yet if any registered letter is lost (a very rare occurrence) the post office is not liable to make it good according to the enactment of 1 Vic. c. 34, s. 25.

## HOW REGISTERED LETTERS ARE SENT.

31. Registered letters are carefully enclosed in green covers, furnished by the post office for that purpose to all postmasters, and are carefully tied up in the letter bill, unsealed, so that all officers through whose hands they may pass can satisfy themselves that they contain the registered letters; it is almost impossible to loose such letters. But money orders are lost daily.

## DELIVERING REGISTERED LETTERS.

32. Postmasters are enjoined "to take especial care in the delivery of registered letters to the persons to whom they may be addressed taking receipts for them, which are to be carefully preserved as vouchers for their safe delivery if applied to for proof, they being held responsible." This plan is preferable to the money order system to those persons who reside several miles from a money order office. For instance, an order sent from London to a person at Allonby, would not be cashed nearer than the post town Carlisle, a distance of nearly twenty-three miles; while a registered letter would be safely delivered at the person's own door.

### LOST REGISTERED LETTERS.

33. Every irregularity connected with registered letters is immediately communicated to the Secretary in London, and when such letters are lost, if traced to a particular postmaster as the last officer through whose hands they passed, he is held responsible. The receipt of registered letters is acknowledged by the initials or name (on the bill) of the officer who may receive it.

### REGISTRATION OF VOTERS' NOTICES OF OBJECTIONS.

34. Under the Act, 6 Vic., cap. 18, notices of objections to voters may be served through the post office to those parties who may reside at a distance. But when such notices are presented to a postmaster he will demand the postage and a registration fee of twopence each notice; and when delivered as addressed the letter carrier delivering such notices is bound to make a written statement of such delivery. Notices to be served by the post office must be posted half-an-hour earlier than ordinary letters, and they can only be registered at post offices in England and Wales where money orders are issued.

### POSTMASTERS AND PUBLIC OFFICERS UNDER THE POST-MASTER GENERAL.

35. Officers employed in the post office service, wilfully contravening the Act of 6th Vic., cap. 18, are liable to a penalty of £100 and immediate dismissal. Postmasters are commanded to put up in a conspicuous part of their office for the information of the public a notice of the hours between which letters can be registered. Where this rule is not observed in country post offices an immediate alteration may be effected by writing (unpaid) to the Postmaster General.

### DETAINED LETTERS.

36. All post office keepers in Great Britain are commanded to detain *any* letter or packet which they have reason to believe contains glass, bottles, razors, scissors, knife, fork, leeches, game, flesh, fish, fruit, vegetables, bladder or vessel containing liquid, or any other thing which by pressure might be injurious to the contents of the mail bags; and should any such packet be dropped into the letter box, it will be detained in the office where posted until instructions from London are given how to dispose of it.

### DETAINED FOREIGN LETTERS.

37. Unpaid letters addressed to any place beyond sea, to which place the postage should be paid in advance, or letters with less than sufficient stamps upon them to clear them as prepaid, are detained in London, and sent to the Dead Letter Office to be opened and returned to the writers if practicable, for more postage. The same rule is adopted with respect to unpaid Newspapers to places where the postage should be paid in advance, only the senders are not allowed to put their addresses upon them, except Newsvenders, and therefore they cannot be returned, in such cases the covers are torn off, and the Newspapers sold as waste paper.

### REFUSED LETTERS.

38. General Post, Ship, and Foreign Letters, refused to be taken in when presented at the address by the Letter carrier, are endorsed "refused," and which he retains in his possession 3 days and finally enters their address into a book kept for that purpose and particular district, walk, or town, after which they are then sent to the Dead Letter Office to be opened and returned to the writer, if thought of sufficient importance, and the sender's address is inside, otherwise they are destroyed if they contain no property.

### LETTERS TO PERSONS REMOVED.

39. Letters addressed to persons who have gone away or removed, and left no subsequent address, and whose letters in consequence cannot be forwarded, are endorsed "gone away and left no address," they are treated the same as refused letters, that is, registered by the letter carrier of the district, and either returned to the writer or destroyed as the case may be, "not having been delivered for the reason assigned thereon."

### LETTERS TO PERSONS WHO CANNOT BE FOUND.

40. Letters sent without a No. to the street, or with a wrong No. in a long street, and which cannot be delivered, are returned after reasonable enquiry, at the end of one week, to the Dead Letter Office, to be opened by the person appointed for that purpose, and returned to the writer after being endorsed by the letter carrier "Cannot be found without a No." Such letters containing property are given up to proper claimants upon the sender in any part of England writing to that effect to the secretary of the Post Office, London; or if in Scotland, to the secretary at Edinburgh; and for Ireland, the secretary in Dublin Post Office.

### MISDIRECTED LETTERS.

41. Letters addressed without a locality are liable to be detained, or kept back in the London Post Office, to be sent out by a later delivery to a street of the same name, nearest the City. Thus, a letter addressed

Mr. Kirk,  
George Street,  
London,

would be sent to George Street, Mansion House, although it might be for the remotest George Street in London, and being endorsed "not known in George Street, Mansion House," would be sent the day following to another George Street, and thus it would be sent to a fresh street every day or two until it had been to the 27 streets of that name, in the last of which Mr. Kirk might reside. Such letters are not "tried" in every street of the same name as the address may be, but are merely signed as a matter of course by the letter carriers as above.

### LETTERS ADDRESSED TO FIRMS ONLY.

42. Letters addressed to single firms as "Halford and Co., London," are sent out of the Post Office for delivery by any letter carrier who happens to have a firm of that name on his district, and after being opened (a liberty always allowed,) and returned if not for the openers, the letter carrier takes it back to the Post Office, and writes upon it the day following "try" some other firm of the same name. Such improperly directed letters are peculiarly *exposed* to the dishonest out of the Post Office and in it, as well as being delayed. It is therefore the safest way to write upon all letters the *best* and *fullest* address possible to insure their safe and immediate delivery, especially in large towns.

### LETTERS ADDRESSED TO PLACES OF THE SAME NAME.

43. Letters which are addressed to places or villages of which there are several of the same name, should always have the market town or nearest Post town upon them as well, if not, they will probably be sent by the Post Office to the nearest or most populous, thus, a newspaper addressed as follows

Mr. Ely,  
Newton,

might be sent to any of the 40 Newtons in England, and after "trying"

four or five would be sent to the Dead Letter Office as waste paper. The same rule applies, only in a less degree, when a county is attached, there being in some counties several places of the same name. Letters and Newspapers thus addressed are frequently detained until the blind sorter has an opportunity to direct them from a gazetteer. Such letters soon become so much disfigured that they are thrown about in the London Office as little better than waste paper, and the original address can scarcely be deciphered, and as no one is responsible for them, they are an easy prey to the dishonest, and are frequently kept from the Dead Letter Office for weeks, at the same time they are being enquired for through the secretary, and when lost, in many cases they cannot be traced.

#### SHIP AND FOREIGN LETTERS IMPROPERLY ADDRESSED.

44. Imperfectly addressed letters from Foreign Countries, and which cannot be delivered, their superscription or address is written upon a table which is hung up in the hall of the Post Office in London, and any person seeing one which he supposes for himself may write opposite the name, his address, and the letter will be sent to him on the following day. Those letters not claimed, after a certain time, are published in the "Packet List," or finally sent to be opened. By the 32nd article of the Postage Convention with Prussia, it is agreed that "Dead Letters, Newspapers, &c., which cannot be delivered from whatever cause, shall be mutually returned every month or oftener if possible."

#### LOST LETTERS, HOW TO ENQUIRE FOR THEM.

45. Letters which have not come to hand can be most expeditiously enquired for of the letter carrier on the district; or by letter, unpaid, sent to the Secretary in London, (a course which is often tediously prolonged,) who can only ask the letter carrier or postmaster, if he has had, seen, or remembers such a letter; when the letter carrier can tell instantly, by referring to his registry book of "old letters," for either a day, week, month, or year past, if the letter had the locality upon it, and if not, it may be travelling all over the town to the streets of the same name, and in that case neither the secretary nor the letter carrier can trace it in most cases.

#### PEERS' AND M.P.'s LETTERS.

46. Letters addressed to "the House of Lords," or "the House of Commons" only, are detained in many cases after the regular despatch of letters at the Post Office in London, and their addresses written upon them,

out of the Post Office Directory, (however imperfect) and if they are not known at the "trial address," they are given to another letter carrier the following day to "try elsewhere." Circulars to be delivered the same morning that they arrive in London should always be addressed to their private residences (from "Vacher's Corrected Monthly Guide," a very small 6d. publication, which may be had through the post and which gives the latest and correctest addresses) or they are liable to be detained. It is likewise a very common practice for letters unpaid to be refused.

### LETTERS TAKEN TO WRONG LOCALITIES.

47. If a letter carrier should take out of the Post Office by mistake any letters which do not belong to his walk or district, when he discovers the error, he must without fail, (immediately after he has delivered his own letters) take them to the parties to whom they are addressed, and explain the cause of delay, as for instance, Bedford Square, for Bedford Row, &c.

### NEWSPAPERS.

48. Must be posted half an hour earlier than letters, at the Post Offices in London which are not more than three miles from the General Office, and in all other towns and places at the same time as letters.

### NEWSPAPERS WITH WRITING UPON THEM.

49. Newspapers with marks upon them, (otherwise than the name and address, and that of the Newsvendor,) initials, or writing upon the covers, are liable to be charged one shilling an oz. when delivered. Newspapers sent as presentation copies with the word "Specimen" stamped upon them are charged, such papers, however, when presented can be refused, but the sender is liable to be prosecuted for a misdemeanor if he can be traced.

### NEWSPAPERS TO THE COLONIES.

50. Newspapers can be sent to the British Colonies free, if posted before seven days after publication and enclosed in covers open at the ends, papers more than seven days old are liable to be sent to the Dead Letter Office, to be sold therefrom as waste paper, and if "Private Ship," is written upon them they are charged 1d. when posted, as all Newspapers by ship, must be paid in advance to whatever place they are sent.



## NEWSPAPERS POSTED WITHOUT AN ADDRESS.

51. Newspapers are returned to the Publishers with the following notice when they are posted without any address;—

“The accompanying Newspapers having no address, and not having been delivered for the reasons assigned thereon, are returned to the Publishers, the *senders* not being known.”

## NEWSPAPERS FOR THE UNITED KINGDOM.

52. Newspapers not plainly addressed, or addressed without a post-town upon them, are detained in many cases until the day following, when a place is written upon them to “try” out of the “Clergy List,” which so far as it refers is used as the standard gazetteer in the Post Office, in preference to the Post Office Directory.

## NEWSPAPERS FROM ABROAD TO PERSONS REMOVED.

53. May be sent to the second address free from any additional charge, to any part of the United Kingdom, if they have not been opened, but if they have been opened they will be charged the full rates of letter postage. Newspapers “Per Packet,” from the Colonies are delivered free in all the post-towns in Great Britain and Ireland, except from Canada and countries through Prussia which pay  $\frac{1}{4}$ d,

## NEWSPAPERS NOT DULY STAMPED.

53.\* Newspapers are stopped and sent to the Stamp Office if not duly stamped when passing through the Post Office.

## WHAT WRITING IS ALLOWED ON PAPERS.

53.\*\* The Postmaster General advises persons in order to secure the regular transmission of Newspapers, to write upon the paper as well as upon the cover, the address of the party to whom they are sent; so that if the cover is displaced by accident the paper will not be lost.

## NEWSPAPERS TO FOREIGN PARTS.

53.\*\*\* To France, Belgium, Prussia, and all countries passing through the two last places, Newspapers can be sent free if specially addressed

“Via Belgium,” on the cover, which must be open at the sides to facilitate examination, they pass free likewise from one Colony to another, but if they are more than a week old they will not be sent but will be sold as waste paper from the Dead Letter Office.

### PRINTED LISTS OF PRICES CURRENT.

54. Lists of Prices Current, if printed, stamped, and authorized by the Postmaster General, pass free in the United Kingdom, when posted before seven days after the date of publication, and Belgium, and Prussia, and also to France when directed “Via Holland,” at one penny each, prepaid.

### MONTHLY PUBLICATIONS, MAGAZINES, AND PAR. PROS.

55. Periodical works which are published as Pamphlets can be sent to Prussia, via Holland or Hamburg, if paid in advance and enclosed in open covers as a Newspaper, at 1d., under 2 ounces, and above 2 ounces and not 3, 6d., and 2d. per ounce above 3 ounces, up to 1 pound in weight. If addressed “Via Belgium,” they will be charged 8d. an ounce extra.

### FOREIGN MAILS PER PACKETS.

56. Mails to foreign countries which are made up in London, are sent two ways: first, by regular Packets, which leave London, Dover, Southampton, Liverpool, and Falmouth, on the following dates—

To Havana... }	} on the 2nd of every month.
Honduras }	
Mexico }	

To Gibraltar ... }	} 3rd and 20th of every month.
Greece .....	
Ionian Isles }	
Malta .....	

To Gibraltar. }	} By the Morning Mails of the 7th, 17th, and 27th of every month.
Lisbon ... }	
Madeira .. }	
Spain ... }	

To Madeira ...	}	2nd and 17th of every month.
West Indies		
Venezuela .		
To Bermuda ...	}	17th of every month only.
Chili .....		
New Granada		
Peru .....		
To Buenos Ayres...	}	4th of every month.
Brazil .....		
Canary Islands .		
Madeira .....		
To Bermuda .....	}	3rd and 18th of every month, except the winter months, Jan., Feb., March, and Dec., then on the 3rd only
B. North America		
United States ....		
To New South Wales...	}	The last day of every month.
New Zealand.....		
Sydney .....		
South Australia ...		
Van Dieman's Land		

## SHIP LETTERS.

57. The second way by which letters can be sent abroad is "by Ship," at any time they may sail, at a uniform rate of 8d. per  $\frac{1}{4}$  oz., or if above that weight, 1s. 4d. per oz. up to any weight; but the ship must be named upon the letter, as

*Mr. Nye,*

*Sydney,*

*"Per Briton."*

*N. S. W.*

or the words "Per Ship" written upon the corner.

All letters not so marked, or "by private ship," are sent by the Mail Packet Ships, and charged accordingly; and ship letters arriving from abroad are marked at the Port at which they arrive before being transmitted to London, to be despatched by the Morning Mails to those towns which are sent in the morning as well as evening, and to all other post towns and places in the evening.

## ENGLISH PORTS AND CHANNEL ISLES.

58. Letters may be sent, if marked "Per Ship," to any port in the United Kingdom, or any of the Channel Islands, such as Guernsey, Jersey, Isle of Man, Shetland, or the Western Isles, at 2d. per oz.

## SHIP POSTAGE.

59. The postage on ship letters is uniformly charged 8d. the  $\frac{1}{2}$  oz., and above that weight, 1s. 4d. per oz. up to any weight, except to France, Belgium, Hamburg, Holland, Bremen, Cuxhaven, Lubeck, Oldenburgh, Hanover, Prussia, Brunswick, and Heligoland, which are charged packet rates.

## SHIP LETTERS POSTED IN GREAT BRITAIN.

60. Letters intended to go by ship are always sent to London (where all bags are made up) unless specially directed to a particular port: thus, a letter posted in Leeds, addressed "Per Ship" to New York, would be sent to London, and from thence to Liverpool, in the course of a week or two; but by reference to a Leeds newspaper, a ship may be found advertized to sail from Liverpool to America in a day or two—in such case, if the letter is addressed thus,

<p><i>John Douglas, Esq.,</i>  <i>Boston,</i>  <i>United States.</i></p> <p><i>Via Liverpool,</i>  <i>"Per Polk Ship."</i></p>
--

it would be despatched from Leeds to Liverpool by the next cross Mail, and arrive at its destination a week sooner, probably, than the ship fixed upon by the Post Office in London to carry the bag.

## ROUTES OF FOREIGN MAILS.

61. As a general rule letters are sent by the quickest route. According to the Prussian Postage Convention, Art. 3, "It is to be understood that the

route to be adopted (for the correspondence of those countries and places where the Prussian Post Office maintains offices) shall be that by which it can reach its destination in the shortest time." Art. 4, "Letters, however, specially addressed, must be forwarded in accordance with the route indicated upon the letter itself."

### UNPAID LETTERS TO FOREIGN PARTS.

62. Letters which are posted unpaid, addressed a particular route and by which the postage should be paid in advance, are not opened and returned to the writers for payment, if there is any other route by which they can be sent unpaid: but if there is only one route, and which *must be paid* in advance, they will be opened and sent back to the writers, if their address is inside. Thus—a letter sent to Sydney unpaid, would be opened in London, and returned to the writer for the postage, there being no unpaid route:—or, a letter posted unpaid "Via Marseilles" to Bombay, would not be opened, but would be detained until the next India Mail was made up, "Via Southampton," a fortnight after, that being an unpaid route.

### LATE LETTER FEES, AND LATEST TIME OF POSTING FOREIGN LETTERS.

62.\* Letters which are "too late" for France, Belgium, Hamburgh, or Holland, can be posted on Tuesdays and Fridays at St. Martin's-le-Grand Office and Lombard Street until 10 o'clock at night on paying one penny each, and at the Chief Office sixpence per letter until quarter-past 10. At all the Receiving Houses in the three mile circle they are received up to 8 o'clock on those nights.

### HOW TO AVOID LETTERS BEING OPENED.

63. To avoid letters being opened, either directed for foreign parts or passing to places inland, the address of the sender should be written upon the cover, or printed upon the envelope; and if the letter cannot be delivered, for the reason assigned thereon, it will be returned unopened by the Dead Letter Office. Likewise, newspapers, with the vendor's name and address printed upon them, are not torn up as waste paper, but are returned; also Provincial Newspapers if the publisher's offices are upon them.

## LETTERS THAT ARE OPENED.

64. Letters which cannot be found as addressed,—unpaid letters, intended to go by private ship,—letters for foreign parts, where the postage should be paid in advance,—letters posted without any address upon them are sent to be opened,—letters containing dangerous articles, when the sender cannot be found,—and letters which are intercepted by the warrant of the Secretary of State,—or unpaid letters to sailors or soldiers.

## LETTERS SENT TO TROPICAL COUNTRIES.

65. Letters sent to or coming from warm countries, should not be sealed with wax, as letters are liable, when tied up in bundles, to adhere to each other, and cannot be separated without tearing them.

Letters sent seaward are exposed to the casualty of being wetted, and by friction in the bags are liable to have the addresses obliterated. To obviate the difficulty which may arise from such accidents, it is advisable in all cases to put the address of the letter, as well as the address of the sender, inside (besides the outside address), to secure its safe delivery.

## OBLITERATED ADDRESSES.

66. Letters from foreign countries which in their transit may be mutilated, and the addresses effaced, are sent to the Dead Letter Office to be opened, where the contents of valuable letters are entered and treasured by the Inspector of Dead Letters, and information respecting them is sent to the sender, or to the persons who should receive them, if their addresses are inside. The restitution of property from such letters is much facilitated by inserting both addresses, a rule which ought to be printed in every school-book, and observed by every letter writer.

## OVERLAND MAIL TO INDIA.

67. Letters sent out to India "Via Marseilles," on the 7th and 24th of every month, do not arrive in India any sooner than the Mail which leaves Southampton on the 3rd and 20th: the Mails meet at Marseilles, and are carried forward as one to India. The return Mail, also, is brought from India as one to Marseilles, where it is divided into two—the one to come "Overland," through France, the other to Southampton by sea. In the following Tables, the Routes for Foreign Mails are indicated, the dates when despatched from London, and the cheapest route. Letters are sent any way the writer may choose, by stating the course on the letter, as "Via Southampton," "Via Marseilles," "Per Ship," &c.

## LOCAL POSTS.

68. Local Posts are established in all large towns; that is, letters from one part of the town to another, or to villages contiguous, are sent out for delivery with the London letters, in most of the towns twice, and in other large places three times a day. Letters posted from one part of a town to another, are subjected to the same rate of postage as if sent to any part of Great Britain or the Channel Islands.

## LONDON LOCAL LETTERS.

69. London has a delivery of local letters ten times a day, within a circle of three miles from St. Paul's; that is, a letter can be posted at any of the 150 Post offices that are in the three mile circle, for any other part within that circle, at the following times, and at the chief office an hour later in the forenoon, and three-quarters of an hour in the afternoon, up to 6 o'clock: thus—a letter,

If posted at $\frac{1}{4}$ to 8 in the morning, will be delivered about 11 o'clock						
If posted before	10	"	"	"	1	"
"	12	"	"	"	2	"
"	1 in the afternoon	"	"	"	3	"
"	2	"	"	"	4	"
"	3	"	"	"	5	"
"	4	"	"	"	6	"
"	5	"	"	"	7	"
"	6 in the evening	"	"	"	9	"
"	8 will be delivered next morning about	9	"	"	"	"

Posts six miles round London.

70. Letters to places six miles from St. Paul's are delivered five times a day; that is,

If posted before 8, are delivered about 1 $\frac{1}{2}$ o'clock						
"	"	12	"	"	2	"
"	"	3	"	"	5	"
"	"	5	"	"	7	"
"	"	6	"	"	8	"

## PLACES TWELVE MILES FROM LONDON.

71. Places within twelve miles of London have three daily deliveries, and one Sunday delivery: thus—a letter posted at Bow,

Before $\frac{1}{4}$ to 10,	for Barnet,	would be delivered about	6	in the evening
$\frac{1}{4}$ to 8	in the evening	"	"	11 next day.
$\frac{1}{4}$ to 2	in the afternoon	"	"	6 in the evening

But places in the same neighbourhood, such as Homerton and Hackney, are not sent to the London office to be sorted and returned, but are delivered through the medium of a Bye Post; that is, letters posted for such places in the morning, are delivered at noon—those posted at noon, the same evening.

## POSTING TIME AT THE CHIEF OFFICE.

72. Letters for all parts of the Metropolis can be posted at the chief office in the City until 7 o'clock in the evening, and for the day deliveries one hour later than at the receiving houses, except in the afternoon, when letters can only be posted up to 6 o'clock, three-quarters of an hour later than at other offices.

## REGISTRATION OF LOCAL POST LETTERS.

73. The same rule applies to letters of value registered in the London District Post, or any other post town in Great Britain, as applies to other places: letters, therefore, intended to be registered for another part of the same town, must be posted half an hour earlier than ordinary letters, or they may be detained by the Letter Receiver until the next post is dispatched.

## POSTED LETTERS, NEVER RETURNED IF APPLIED FOR.

74. Postmaster's in the country and Receiver's in London are prohibited returning letters under any pretence whatever; and are to observe it as a principle, that if a letter is once dropped into the box, it becomes property confided to the care of the Postmaster General, and is regarded as the property of the party to whom it is addressed.

## NEWSPAPERS POSTED FOR THE SAME TOWN.

75. Newspapers posted within the three mile circle in London, or in any other town, for the same town, are charged one penny upon delivery; but if posted beyond the circle of three miles to any place therein, they pass free.



## LETTERS RE-DIRECTED.

76. A letter presented as addressed, and the party having removed to another place, if redirected will be charged after the rate of twopence per ounce (except officers, sailors, and private soldiers who may have removed from one station or barracks to another). But to avoid such letters being charged or delayed, a person removing from one part of the town or country to another, should apprise the Inspector of Letter Carriers, if in London, and Postmasters if in the country, of such removal, and on the fact being ascertained to be correct by the letter carrier of the district, they will be re-directed accordingly at the Post Office, without charge or being delayed

## LETTERS LEFT UNTIL CALLED FOR.

77. Letters addressed to be left until called for at the Branch Offices in Lombard Street, Charing Cross, or Vere Street, are refused to be taken in by the "Clerks at Windows," and all letters so addressed are sent to the Paid Letter Window at St. Martin's le Grand, where application can be made between 10 and 4 o'clock in the day; and any such letters not applied for within a reasonable time, they are endorsed "not called for," and sent to the Dead Letter Office to be opened and returned, if the address of the writer is inside. Such letters should be particularly addressed "to be left until called for," or they are liable to be given to persons of the same name in that establishment.

## OFFICIAL LETTERS.

78. Letters on general matters of the Post Office should be addressed, unpaid, to the

*Postmaster General, London,*

and letters on particular matters, such as delayed, lost, or misdelivered letters,—the transfer of money orders from one post town to another—repayments, &c., may be sent unpaid, if in England to the Secretary of the Post Office in London, if in Ireland to the Dublin Secretary, and if in Scotland to the Secretary in Edinburgh.

# MAILS TO ALL PARTS

*Time of despatch from London, and various Routes, by which Letters and  
and to where Newspapers*

*N. B.—The ☞ indicates that that is the Route the Post Office sends letters if  
The \* intimates that if Sunday occurs on that date, the Mail is made up  
The † indicates that if the date occurs on a Sunday, the Mail is made  
As the dates refer to the time the Mails are made up in London, it will  
by those dates. Likewise letters posted in Scotland and Ireland.*

Countries, Cities, Kingdoms, & States.	Dates and Days when Mails are made up in London.
AFRICA (Interior) .....	Occasionally .....
ALEXANDRIA .....	Occasionally .....
	7th, 17th, and 27th of every month .....
	3rd & 20th of each month, unless Sunday intervenes, then the 2nd & 19th .....
	* 7th and 24th of every month .....
ALGERIA .....	Daily .....
AMERICA (United States) .....	Twice a month, 3rd and 18th, except Jan. Feb. March and Dec. then the 3rd only
AMERICA (British) .....	Ditto .....
AMERICA (South) .....	
ARABIA .....	* 7th and 24th of every month .....
	† 3rd and 20th of every month .....
ARMENIA .....	* 7th and 24th of every month .....
AUSTRALIA .....	Last day of each month .....
	* 7th and 24th of every month .....
	† Twice a month, 3rd and 20th .....
	Uncertain .....
AUSTRIAN DOMINIONS .....	Daily .....
	Daily .....
	Tuesdays and Fridays .....
AZORES .....	Three times a month, *7th, 17th, and 27th
BADEN .....	Daily .....
	Daily .....
	Every Wednesday and Saturday morning

*Newspapers can be sent, distinguishing places where postage is optional can be sent free.*

*not directed any other way.*

*the following day.*

*up the day before.*

*be necessary for letters from the Country to be posted so as to arrive in London*

By what Routes Letters can be sent.	Postage, optional or otherwise	Weights allowed to pass by each country, and the Postage if prepaid for the single rate.	Newspapers.
Per Ship .....	Must be Prepaid	Under s. d.	
Per Ship .....	Must be Prepaid	$\frac{1}{2}$ oz.—0 8	1d.
Via Marseilles, per French Packet ...	Optional	$\frac{1}{2}$ oz.—0 8	1d.
Via Southampton...	Optional	$\frac{1}{4}$ oz.—1 3	2d.
↖ Via India Mail	Optional	$\frac{1}{2}$ oz.—1 6	2d.
Via France .....	Optional	$\frac{1}{4}$ oz.—1 8	3d.
Via Packet .....	Must be Prepaid.	$\frac{1}{2}$ oz.—0 10	Free
Via Packet .....	Optional	$\frac{1}{2}$ oz.—1 0	2d.
Via Packet .....		$\frac{1}{2}$ oz.—1 2	Free
See <i>Bolivia</i> <i>Brazil</i> <i>Peru</i> <i>Venezuela</i>			
↖ Via Marseilles .	Must be Prepaid	$\frac{1}{4}$ oz.—1 10	3d.
Via Southampton...	Optional	$\frac{1}{2}$ oz.—1 0	Free
Via Marseilles .....	Must be Prepaid	$\frac{1}{2}$ oz.—1 8	2d.
↖ Via Packet ...	Must be Prepaid	$\frac{1}{2}$ oz.—1 0	Free
Via India .....	Must be Prepaid	$\frac{1}{2}$ oz.—2 7	5d.
Via Southampton...	Must be Prepaid	$\frac{1}{2}$ oz.—1 4	2d.
Per Ship .....	Must be Prepaid	$\frac{1}{2}$ oz.—0 8	1d.
↖ Via France ...	Optional	$\frac{1}{4}$ oz.—1 5	2d.
Via Belgium.....	Optional	$\frac{1}{4}$ oz.—1 8	Free
Via Hamburgh ...	Optional	$\frac{1}{4}$ oz.—1 7	Free
Via Southampton...	Must be Prepaid	$\frac{1}{2}$ oz.—1 9	2d.
↖ Via France ...	Optional	$\frac{1}{4}$ oz.—0 9	2d.
Via Belgium.....	Optional	$\frac{1}{4}$ oz.—1 3	Free
Via Holland.....	Optional	$\frac{1}{4}$ oz.—1 3	Free

# MAILS TO ALL PARTS

*Time of despatch from London, and various Routes, by which Letters and  
and to where Newspapers*

Countries, Cities, Kingdoms, & States.	Dates and Days when Mails are made up in London.
BAHAMAS .....	Twice a month, 2nd and 17th*
BALEARIC ISLANDS .....	Daily
	7th, 17th, and 27th*
BARBARY .....	Uncertain
BELGIUM .....	Daily
BAVARIA .....	Daily
BERMUDA .....	3rd and 18th, except Jan., Feb., March, and Dec., then 3rd only
	*17th of every month
BEYROUT .....	*7th 17th and 27th of the month
BOHEMIA .....	Daily
	Daily
BOLIVIA .....	17th of every month
BORNEO .....	Occasionally
	*7th and 24th of the month
	*3rd and 20th of the month
BRAZIL .....	*4th of the month
BREMEN .....	Daily
	Daily
	Tuesday and Friday
	<del>Tuesday</del> Tuesday and Friday
BRUNSWICK .....	Daily
	Daily
BUENOS AYRES .....	*4th of every month
	Occasionally
CANADAS .....	3rd and 18th, except Jan., Feb., March., and Dec., then 3rd only
	Occasionally
CANARY ISLANDS .....	*4th of every month
CEYLON .....	*7th and 24th of each month
	3rd and 20th of each month
CHAGRES .....	Morning, 17th of each month
CHILI .....	Ditto
CHINA (except Hong Kong, see) ...	*24th of each month
	†20th of each month

*Newspapers can be sent, distinguishing places where postage is optional can be sent free.*

By what Routes Letters can be sent.	Postage, optional or otherwise.	Weights allowed to pass by each country, and the Postage, if prepaid, for the single rate.	Newspapers.
Via Southampton...	Optional	Under s. d. $\frac{1}{2}$ oz.—1 0	Free
☞ Via France ...	Must be Prepaid	$\frac{1}{2}$ oz.—0 10	$\frac{1}{2}$ d.
Via Southampton...	Must be Prepaid	$\frac{1}{2}$ oz.—2 2	Free
☞ Per Ship .....	Must be Prepaid	$\frac{1}{2}$ oz.—0 8	1d.
Per Packet .....	Optional	$\frac{1}{4}$ oz.—1 0	Free
☞ Via France ...	Optional	$\frac{1}{4}$ oz.—1 8	2d.
Via Packet .....	Optional	$\frac{1}{2}$ oz.—1 0	Free
Via Southampton...	Optional	$\frac{1}{2}$ oz.—1 0	Free
Via Marseilles .....	Optional	$\frac{1}{2}$ oz.—1 3	2d.
☞ Via France ...	Optional	$\frac{1}{4}$ oz.—1 5	2d.
Via Belgium .....	Optional	$\frac{1}{2}$ oz.—1 8	Free
Via Packet .....	Must be Prepaid	$\frac{1}{2}$ oz.—2 0	Free
☞ Per Ship.....	Must be Prepaid	$\frac{1}{2}$ oz.—0 8	2d.
Via Marseilles .....	Must be Prepaid	$\frac{1}{4}$ oz.—2 2	5d.
Via Southampton...	Must be Prepaid	$\frac{1}{2}$ oz.—1 4	4d.
Via Falmouth .....	Must be Prepaid	$\frac{1}{2}$ oz.—2 9	2d.
Via France .....	Optional	$\frac{1}{4}$ oz.—1 3	2d.
Via Belgium.....	Optional	$\frac{1}{2}$ oz.—1 4	Free
☞ Via Hamburg .	Optional	$\frac{1}{2}$ oz.—0 8	Free
Per Packet .....	Optional	$\frac{1}{2}$ oz.—0 9	Free
Via Belgium .....	Optional	$\frac{1}{4}$ oz.—1 3	Free
Via France .....	Optional	$\frac{1}{2}$ oz.—1 8	2d.
Per Packet .....	Must be Prepaid	$\frac{1}{2}$ oz.—2 7	Free
Per Ship .....	Must be Prepaid	$\frac{1}{2}$ oz.—0 8	1d.
Per Packet .....	Optional	$\frac{1}{2}$ oz.—1 0	Free
Via Ship .....	Must be Prepaid	$\frac{1}{2}$ oz.—0 8	1d.
Via Packet .....	Must be Prepaid	$\frac{1}{2}$ oz.—1 10	2d.
Via Marseilles .....	Must be Prepaid	$\frac{1}{2}$ oz.—1 10	3d.
Via Southampton...	Optional	$\frac{1}{2}$ oz.—1 0	Free
Via Southampton...	Must be Prepaid	$\frac{1}{2}$ oz.—1 0	Free
Via Southampton...	Must be Prepaid	$\frac{1}{2}$ oz.—2 0	4d.
Via Marseilles .....	Must be Prepaid	$\frac{1}{4}$ oz.—1 10	3d.
Via Southampton...	Must be Prepaid	$\frac{1}{2}$ oz.—1 0	2d.

B

# MAILS TO ALL PARTS

*Time of despatch from London, and various Routes, by which Letters and  
and to where Newspapers*

Countries, Cities, Kingdoms, & States.	Dates and Days when Mails are made up in London.
CHINA, (except Hong Kong, see).....	Uncertain .....
COLOMBIA .....	Morning, *17th and †2nd of each month Occasionally .....
CONSTANTINOPLE .....	7th, 17th, and 27th of each month .....
	Daily .....
	Occasionally .....
CORSICA .....	Daily .....
	7th, 17th, 27th .....
CRACOW .....	Tuesday and Friday .....
	Daily .....
	Daily .....
CUBA .....	Morning, †2nd and *17th of each month Uncertain .....
CROATIA .....	Daily .....
	Daily .....
	Wednesday and Saturday .....
	Tuesday and Friday .....
DALMATIA .....	Daily .....
	Tuesday and Friday .....
DARDANELLES .....	7th, 17th, and 27th of each month .....
DENMARK .....	Tuesday and Friday .....
	Daily .....
	Daily .....
EGYPT .....	*7th and 24th of the month .....
	†3rd and 20th of each month .....
	7th, 17th, and 27th of the month .....
ECUADOR .....	Morning of the *17th only .....
ENGLAND .....	Twice a day .....
	Boxes Close in London 7h. 45m. Morning
FALKLAND ISLES .....	4th of every month .....
	Occasionally .....
FRANCE .....	Daily .....
	Occasionally .....
FRANKFORT (Free) .....	Tuesday and Friday Evening, and Wed- nesday and Saturday Morning .....

*Newspapers can be sent, distinguishing places where postage is optional can be sent free.*

By what Routes Letters can be sent.	Postage, optional or otherwise.	Weights allowed to pass by each country, and the Postage, if prepaid, for the single rate.	Newspapers.
		Under s. d.	
Per Ship .....	Must be Prepaid	$\frac{1}{2}$ oz.—0 8	1d.
Via Southampton...	Must be Prepaid	$\frac{1}{2}$ oz.—1 0	Free
Per Ship .....	Must be Prepaid	$\frac{1}{2}$ oz.—0 8	1d.
Via French Packet.	Optional	$\frac{1}{4}$ oz.—1 3	2d.
Via France .....	Optional	$\frac{1}{4}$ oz.—1 11	2d.
Per Ship .....	Must be Prepaid	$\frac{1}{2}$ oz.—0 8	1d.
Via France .....	Must be Prepaid	$\frac{1}{2}$ oz.—0 10	2d.
Via French Packet	Must be Prepaid	$\frac{1}{4}$ oz.—1 3	2d.
Via Hamburg .....	Optional	$\frac{1}{2}$ oz.—2 1	Free
☞ Via Belgium....	Optional	$\frac{1}{2}$ oz.—2 1	Free
Via France .....	Optional	$\frac{1}{2}$ oz.—1 5	2d.
Via Southampton...	Must be Prepaid	$\frac{1}{2}$ oz.—2 3	2d.
Per Ship .....	Must be Prepaid	$\frac{1}{2}$ oz.—0 8	1d.
☞ Via France ...	Optional	$\frac{1}{2}$ oz.—1 5	2d.
Via Belgium....	Optional	$\frac{1}{2}$ oz.—1 8	Free
Via Holland.....	Optional	$\frac{1}{2}$ oz.—1 8	Free
Via Hamburg.....	Optional	$\frac{1}{2}$ oz.—1 7	Free
☞ Via France ...	Optional	$\frac{1}{2}$ oz.—1 5	2d.
Via Hamburg .....	Optional	$\frac{1}{2}$ oz.—1 3	Free
Via Fr. Pkt. ....	Optional	$\frac{1}{2}$ oz.—1 3	2d.
☞ Via Hamburg .	Optional	$\frac{1}{2}$ oz.—0 10	Free
Via France .....	Optional	$\frac{1}{2}$ oz.—1 8	2d.
Via Belgium .....	Optional	$\frac{1}{2}$ oz.—1 8	Free
☞ Via Marseilles.	Must be Prepaid	$\frac{1}{2}$ oz.—1 8	3d.
Via Southampton...	Must be Prepaid	$\frac{1}{2}$ oz.—1 6	2d.
Via French Packet.	Must be Prepaid	$\frac{1}{2}$ oz.—1 3	2d.
Via Packet .....	Must be Prepaid	$\frac{1}{2}$ oz.—2 0	Free
Morn & Even Mails 5h. 30m. Evening.	Option if Paid	$\frac{1}{2}$ oz.—0 1	Free
Via Falmouth .....	Must be Prepaid	$\frac{1}{2}$ oz.—2 9	Free
☞ Per Ship .....	Must be Prepaid	$\frac{1}{2}$ oz.—0 8	1d.
Via Dover .....	Optional	$\frac{1}{4}$ oz.—0 10	Free
Per Ship .....	Must be Prepaid	$\frac{1}{2}$ oz.—0 8	1d.
Via Packet .....	Optional	$\frac{1}{4}$ oz.—1 4	Free

# MAILS TO ALL PARTS

*Time of despatch from London, and various Routes, by which Letters and  
and to where Newspapers*

Countries, Cities, Kingdoms, & States.	Dates and Days when Mails are made up in London.
FRANKFORT, (Free) .....	Daily .....
GALLICIA .....	Daily .....
GERMANY .....	Tuesday and Friday .....
GIBRALTAR .....	Daily .....
GREECE .....	Daily .....
GUATEMALA, North America ..	3rd, 7th, 20th, and 27th of every month ..
HAMBURG .....	Daily .....
HANOVER .....	†3rd, 17th, and 20th of every month ..
HAVANA .....	*7th, 17th, and 27th of the month .....
HELIGOLAND .....	Morning†, 2nd of every month only ..
HESE DARMSTADT .....	Tuesday and Friday .....
HESE ELECTORAL .....	Daily .....
HESE HOMBURG .....	Daily .....
HINDUSTAN .....	Daily .....
HOLLAND .....	†2nd of every month only .....
HOLSTEIN .....	Tuesday and Friday .....
HONDURAS .....	Daily .....
HONG KONG .....	Daily .....
	Wednesday and Saturday Mornings ..
	Daily .....
	Tuesday and Friday .....
	Daily .....
	Daily .....
	Wednesday and Saturday .....
	†2nd of each month only .....
	*24th of each month .....
	†20th of each month .....



*Newspapers can be sent, distinguishing places where postage is optional can be sent free.*

By what Routes Letters can be sent	Postage, optional or otherwise.	Weights allowed to pass by each country, and the Postage, if prepaid, for the single rate.	Newspapers.
☞ Via Belgium...	Optional	Under s. d. $\frac{1}{4}$ oz.—1 4	Free
Via France .....	Optional	$\frac{1}{4}$ oz.—1 3	2d.
Via Hamburg .....	Optional	$\frac{1}{4}$ oz.—1 3	Free
☞ Via Belgium...	Optional	$\frac{1}{4}$ oz.—1 4	Free
Via France .....	Optional	$\frac{1}{4}$ oz.—1 3	2d.
Via Southampton...	Optional	$\frac{1}{2}$ oz.—1 0	Free
Via Packet .....		$\frac{1}{2}$ oz.—0 8	Free
Via Southampton...	Must be Prepaid	$\frac{1}{2}$ oz.—1 6	Free
Via French Packet.	Optional	$\frac{1}{2}$ oz.—1 5	1d.
Via Southampton...	Optional	$\frac{1}{2}$ oz.—1 0	Free
☞ Per Packet ...	Optional	$\frac{1}{2}$ oz.—0 8	Free
Via France .....	Optional	$\frac{1}{2}$ oz.—1 8	2d.
Via Belgium .....	Optional	$\frac{1}{2}$ oz.—1 4	Free
☞ Via Hamburg .	Optional	$\frac{1}{2}$ oz.—0 9	Free
Via France .....	Optional	$\frac{1}{2}$ oz.—1 8	2d.
Via Belgium .....	Optional	$\frac{1}{2}$ oz.—1 5	Free
Via Southampton...	Must be Prepaid	$\frac{1}{2}$ oz.—2 3	2d.
Via Hamburg .....	Must be Prepaid	$\frac{1}{2}$ oz.—0 6	Free
☞ Via Belgium .	Optional	$\frac{1}{4}$ oz.—1 4	Free
Via France .....	Optional	$\frac{1}{4}$ oz.—1 3	2d.
☞ Via Belgium .	Optional	$\frac{1}{4}$ oz.—1 4	Free
Via France .....	Optional	$\frac{1}{4}$ oz.—1 3	2d.
☞ Via Belgium .	Optional	$\frac{1}{4}$ oz.—1 4	Free
Via France .....	Optional	$\frac{1}{4}$ oz.—1 3	2d.
Via Southampton...	Optional	$\frac{1}{2}$ oz.—1 0	Free
Via Marseilles .....	Must be Prepaid	$\frac{1}{2}$ oz.—1 10	3d.
☞ Via Packet ...	Optional	$\frac{1}{2}$ oz.—1 0	Free
Via France .....	Optional	$\frac{1}{4}$ oz.—0 10	2d.
☞ Via Hamburg	Optional	$\frac{1}{2}$ oz.—0 10	Free
Via France .....	Optional	oz.—1 8	2d.
Via Belgium.....	Optional	$\frac{1}{4}$ oz.—1 8	Free
Via Holland.....	Optional	$\frac{1}{4}$ oz.—1 8	Free
Via Packet .....	Optional	$\frac{1}{2}$ oz.—1 0	Free
Via Marseilles .....	Must be Prepaid	$\frac{1}{4}$ oz.—1 10	3d.
Via Southampton...	Optional	$\frac{1}{2}$ oz.—1 0	Free

*Time of despatch from London, and various Routes, by which Letters and  
and to where Newspapers*

Countries, Cities, Kingdoms, & States.	Dates and Days when Mails are made up in London.
HUNGARY .....	Daily .....
	Daily .....
ILLYRIA .....	Daily .....
	Daily .....
INDIA .....	*7th and 24th of each month .....
	†3rd and 20th of every month .....
IONIAN ISLANDS .....	†3rd and 20th of every month .....
	*7th and 24th of every month .....
IRELAND .....	Twice a day .....
ITALY .....	Daily .....
	7th, 17th, and 27th of the month .....
JAMAICA .....	†2nd and *17th of every month .....
JAVA .....	Wednesday and Saturday .....
	*7th and 24th of each month .....
	*3rd and 20th of each month .....
	Occasionally .....
LA GUAYRA .....	†2nd and *17th of every month .....
LA PLATA .....	*4th of every month only .....
LEEWARD ISLANDS .....	†2nd and *17th of every month .....
LIPPE DETMOLD .....	Daily .....
	Daily .....
LOMBARDY .....	Daily .....
LUBECK .....	Tuesday and Friday .....
	Daily .....
	Daily .....
	Daily .....
LUCCA .....	Daily .....
MADAGASCAR .....	Uncertain .....
MADEIRA .....	*7th, 17th, and 27th of each month ..
	4th of every month .....
	†2nd and *17th of the month .....
MALTA .....	†Morning, 3rd and 20th of the month ...
	*7th and 24th of the month .....
MAURITIUS .....	*7th and 24th of the month .....
	†2nd and *17th of the month .....
MECKLENBURG STRELITZ ...	Daily .....

*Newspapers can be sent, distinguishing places where postage is optional can be sent free.*

By what Routes Letters can be sent.	Postage, optional or otherwise.	Weights allowed to pass by each country, and the Postage, if prepaid, for the single rate.	Newspapers.
Via Belgium .....	Optional	Under s. d. $\frac{1}{4}$ oz.—1 8	Free
☞ Via France ...	Optional	$\frac{1}{4}$ oz.—1 5	2d.
Via Belgium .....	Optional	$\frac{1}{4}$ oz.—1 8	Free
☞ Via France ...	Optional	$\frac{1}{4}$ oz.—1 5	2d.
Via Marseilles.....	Must be Prepaid	$\frac{1}{4}$ oz.—1 10	3d.
Via Southampton...	Optional	$\frac{1}{2}$ oz.—1 0	Free
Via Southampton...	Optional	$\frac{1}{2}$ oz.—1 0	Free
Via Marseilles.....	Must be Prepaid	$\frac{1}{4}$ oz.—1 8	3d.
Morning & Evening	Optional if Paid	$\frac{1}{2}$ oz.—0 1	Free
Via France .....	Optional	$\frac{1}{4}$ oz.—1 3	2d.
Via French Packet.	Optional	$\frac{1}{4}$ oz.—1 7	2d.
Via Southampton...	Optional	$\frac{1}{2}$ oz.—1 2	Free
Via Holland.....	Must be Prepaid	$\frac{1}{2}$ oz.—1 0	1d.
Via Marseilles.....	Must be Prepaid	$\frac{1}{4}$ oz.—2 2	5d.
Via Southampton..	Must be Prepaid	$\frac{1}{2}$ oz.—1 4	4d.
Per Ship .....	Must be Prepaid	$\frac{1}{2}$ oz.—0 8	2d.
Via Southampton ..	Must be Prepaid	$\frac{1}{2}$ oz.—1 0	Free
Via Falmouth .....	Must be Prepaid	$\frac{1}{2}$ oz.—2 7	Free
Via Southampton...	Optional	$\frac{1}{2}$ oz.—1 0	Free
☞ Via Belgium...	Optional	$\frac{1}{4}$ oz.—1 4	Free
Via France .....	Optional	$\frac{1}{4}$ oz.—1 3	2d.
Via France .....	Optional	$\frac{1}{4}$ oz.—1 5	2d.
☞ Via Hamburg.	Optional	$\frac{1}{2}$ oz.—0 9	Free
Via France .....	Optional	$\frac{1}{4}$ oz.—1 3	2d.
Via Belgium .....	Optional	$\frac{1}{2}$ oz.—1 4	Free
Via France .....	Must be Prepaid	$\frac{1}{4}$ oz.—0 10	2d.
Per Ship .....	Must be Prepaid	$\frac{1}{2}$ oz.—0 8	1d.
Via Lisbon .....	Must be Prepaid	$\frac{1}{2}$ oz.—1 9	2d.
Via Falmouth .....	Must be Prepaid	$\frac{1}{2}$ oz.—1 10	2d.
Via Southampton...	Must be Prepaid	$\frac{1}{2}$ oz.—1 10	2d.
Via Southampton...	Optional	$\frac{1}{2}$ oz.—1 0	Free
☞ Via Marseilles.	Optional	$\frac{1}{4}$ oz.—1 3	3d.
Via Marseilles.....	Must be Prepaid	$\frac{1}{4}$ oz.—2 2	5d.
Via Southampton...	Optional	$\frac{1}{2}$ oz.—1 4	2d.
☞ Via Belgium .	Optional	$\frac{1}{4}$ oz.—1 3	Free

*Time of despatch from London, and various Routes, by which Letters and  
and to where Newspapers*

Countries, Cities, Kingdoms, & States.	Dates and Days when Mails are made up in London.
MECKLENBURG STRELITZ ...	Tuesday and Friday .....
	Daily .....
MECKLENBURG SCHWERIN ...	Tuesday and Friday .....
	Daily .....
	Daily .....
MEXICO .....	†2nd of the month only .....
MODENA .....	Daily .....
	7th, 17th, and 27th of the month ...
MOLDAVIA .....	Daily .....
MOLUCCA ISLAND .....	†3rd and 20th of the month .....
	*7th and 24th of the month .....
	Occasionally .....
MORAVIA .....	Daily .....
	Daily .....
	Tuesday and Friday .....
MOROCCO .....	Occasionally .....
NAPLES .....	Daily .....
	7th, 17th, and 27th of each month ...
NASSAU (Germany) .....	Daily .....
	Daily .....
NASSAU (America) .....	†2nd and *17th of each month .....
NEWFOUNDLAND .....	*3rd and 18th of each month, except Jan.
	Feb., March, and Dec., then 3rd only
	Occasionally .....
NEW GRANADA .....	†17th of the month only .....
	Occasionally .....
NEW SOUTH WALES .....	†Last day of each month .....
	Occasionally .....
	†3rd and 20th of each month .....
	*7th and 24th of each month .....
NEW ZEALAND .....	†Last day of each month .....
	†3rd and 20th of each month .....
	*7th and 24th of each month .....
	Uncertain .....

# OF THE WORLD.

*Newspapers can be sent, distinguishing places where postage is optional can be sent free.*

By what Routes Letters can be sent.	Postage, optional or otherwise.	Weights allowed to pass by each country, and the Postage, if prepaid, for the single rate.	Newspapers.
		Under s. d.	
Via Hamburg .....	Optional	$\frac{1}{4}$ oz.—1 3	Free
Via France .....	Optional	$\frac{1}{4}$ oz.—1 8	2d.
Via Hamburg .....	Optional	$\frac{1}{4}$ oz.—1 3	Free
☞ Via Belgium...	Optional	$\frac{1}{4}$ oz.—1 3	Free
Via France .....	Optional	$\frac{1}{4}$ oz.—1 8	2d.
Via Southampton...	Must be Prepaid	$\frac{1}{2}$ oz.—2 3	Free
Via France .....	Paid to Calais 5d	$\frac{1}{4}$ oz.—1 3	2d.
Via French Packet.	Cannot be Prepaid		2d.
Via France .....	Optional	$\frac{1}{4}$ oz.—1 9	2d.
Via Southampton...	Optional	$\frac{1}{2}$ oz.—1 4	4d.
Via Marseilles .....	Must be Prepaid	$\frac{1}{4}$ oz.—2 2	5d.
Per Ship .....	Must be Prepaid	$\frac{1}{2}$ oz.—0 8	2d.
Via Belgium .....	Optional	$\frac{1}{4}$ oz.—1 8	Free
☞ Via France .....	Optional	$\frac{1}{4}$ oz.—1 5	2d.
Via Hamburg .....	Optional	$\frac{1}{4}$ oz.—1 7	Free
Per Ship .....	Must be Prepaid	$\frac{1}{4}$ oz.—0 8	1d.
Via France .....	Paid to Calais 5d		
	To the Frontier	$\frac{1}{4}$ oz.—1 3	2d.
Via French Packet.	Unpaid		2d.
Via France .....	Optional	$\frac{1}{4}$ oz.—1 3	2d.
☞ Via Belgium...	Optional	$\frac{1}{4}$ oz.—1 4	Free
Via Southampton...	Optional	$\frac{1}{2}$ oz.—1 0	Free
Per Packet .....	Optional	$\frac{1}{2}$ oz.—1 0	Free
Per Ship .....	Must be Prepaid	$\frac{1}{2}$ oz.—0 8	1d.
Via Southampton...	Must be Prepaid	$\frac{1}{2}$ oz.—2 3	Free
Per Ship .....	Must be Prepaid	$\frac{1}{2}$ oz.—0 8	1d.
☞ Per Packet ...	Must be Prepaid	$\frac{1}{2}$ oz.—1 0	Free
Per Ship .....	Must be Prepaid	$\frac{1}{2}$ oz.—0 8	1d.
Via Southampton...	Must be Prepaid	$\frac{1}{2}$ oz.—1 4	2d.
Via Marseilles .....	Must be Prepaid	$\frac{1}{4}$ oz.—2 2	5d.
☞ Per Packet ...	Must be Prepaid	$\frac{1}{2}$ oz....1 0	Free
Via Southampton...	Must be Prepaid	$\frac{1}{2}$ oz.—1 4	2d.
Via Marseilles .....	Must be Prepaid	$\frac{1}{4}$ oz.—2 2	5d.
Per Ship .....	Must be Prepaid	$\frac{1}{2}$ oz.—0 8	1d.

# MAILS TO ALL PARTS

*Time of despatch from London, and various Routes, by which Letters and  
and to where Newspapers*

Countries, Cities, Kingdoms, & States.	Dates and Days when Mails are made up in London.
NORTH AMERICA .....	*Twice a month, 3rd and 18th, except Jan- Feb., March, and Dec., then 3rd only. Occasionally .....
NORWAY .....	Daily .....
	Daily .....
	Tuesday and Friday .....
NOVA SCOTIA .....	*3rd and 18th of each month, except Jan- Feb., March, and Dec., then 3rd only. Uncertain .....
OLDENBURG .....	Tuesday and Friday .....
	Daily .....
	Daily .....
PANAMA .....	*Morning of the 17th only .....
	Occasionally .....
PAPAL STATES .....	7th, 17th, and 27th of the month .....
	Daily .....
PARMA .....	Daily .....
	7th, 17th, and 27th of the month .....
PLACENTIA .....	Daily .....
	7th, 17th, and 27th of the month .....
PERSIA .....	3rd and 20th of each month .....
	10th, 20th, and 30th of each month .....
	*7th and 24th of each month .....
PERU .....	*Morning, 17th of the month only .....
	Occasionally .....
POLAND .....	Daily .....
	Daily .....
PORT PHILIP .....	Last day of every month .....
	Occasionally .....
	†3rd and 20th of the month .....
	*7th and 24th of the month .....
PORTUGAL .....	* 7th, 17th and 27th of the month .....
	Daily .....
PRUSSIA .....	Daily .....

*Newspapers can be sent, distinguishing places where postage is optional can be sent free.*

By what Routes Letters can be sent.	Postage, optional or otherwise.	Weights allowed to pass by each country, and the Postage if prepaid, for the single rate.		Newspapers.
		Under	s. d.	
Per Packet .....	Must be Prepaid	$\frac{1}{2}$ oz.—1	0	2d.
Per Ship .....	Must be Prepaid	$\frac{3}{4}$ oz.—0	8	1d.
Via Belgium .....	Optional	$\frac{1}{4}$ oz.—1	10	Free
Via France .....	Optional	$\frac{1}{4}$ oz.—1	8	2d.
☞ Via Hamburg .	Optional	$\frac{1}{4}$ oz.—1	10	Free
Per Packet .....	Optional	$\frac{1}{2}$ oz.—1	2	Free
Per Ship .....	Must be Prepaid	$\frac{1}{2}$ oz.—0	8	1d.
☞ Via Hamburg .	Must be Prepaid	$\frac{1}{2}$ oz.—0	6	Free
Via Belgium .....	Optional	$\frac{1}{4}$ oz.—1	3	Free
Via France .....	Optional	$\frac{1}{4}$ oz.—1	8	2d.
Per Packet .....	Must be Prepaid	$\frac{1}{2}$ oz.—2	0	Free
Per Ship .....	Must be Prepaid	$\frac{1}{2}$ oz.—0	8	1d.
Per French Packet.	Uupaid			2d.
Via France .....	Can be pd to Calais 5d Or to Sardinia	$\frac{1}{4}$ oz.—1	7	2d.
Via France .....	Paid to Calais 5d	$\frac{1}{4}$ oz.—1	3	2d.
Per French Packet.	Optional	$\frac{1}{4}$ oz.—1	7	2d.
Via France ... ..	Paid to Calais 5d	$\frac{1}{4}$ oz.—1	3	2d.
Via French Packet.	Optional	$\frac{1}{4}$ oz.—1	7	2d.
Via Southampton...	Must be Prepaid	$\frac{1}{2}$ oz.—1	6	2d.
Via French Packet.	Must be Prepaid	$\frac{1}{4}$ oz.—1	3	2d.
Via Marseilles .....	Must be Prepaid	$\frac{1}{4}$ oz.—1	8	3d.
Per Packet .....	Must be Prepaid	$\frac{1}{2}$ oz.—2	0	Free
Per Ship .....	Must be Prepaid	$\frac{1}{2}$ oz.—0	8	1d.
☞ Via Belgium...	Optional	$\frac{1}{4}$ oz.—2	1	Free
Via France .....	Optional	$\frac{1}{4}$ oz.—1	6	2d.
☞ Per Packet ...	Must be Prepaid	$\frac{1}{2}$ oz.—1	0	Free
Per Ship .....	Must be Prepaid	$\frac{3}{4}$ oz.—0	8	1d.
Via Southampton...	Must be Prepaid	$\frac{1}{2}$ oz.—1	4	2d.
Via Marseilles .....	Must be Prepaid	$\frac{1}{4}$ oz.—2	2	5d.
☞ Via Southmptn	Must be Prepaid	$\frac{1}{2}$ oz.—1	9	2d.
Via France .....	Must be Prepaid	$\frac{1}{4}$ oz.—0	10	2d.
☞ Via Belgium...	Optional	$\frac{1}{2}$ oz.—1	4	Free

# MAILS TO ALL PARTS

*Time of despatch from London, and various Routes, by which Letters and  
and to where Newspapers*

Countries, Cities, Kingdoms, & States.	Dates and Days when Mails are made up in London.
PRUSSIA .....	Wednesday and Saturday ..... } Tuesday and Friday ..... }
REUSS (Germany) .....	Daily .....
	Daily .....
ROMAN STATES .....	Wednesday and Saturday ..... } Tuesday and Friday ..... }
	7th, 17th, and 27th of the month .....
	Daily .....
RUSSIA (North) .....	Tuesday and Friday .....
	Daily .....
RUSSIA (South) .....	Daily .....
	Daily .....
ST. DOMINGO or HAYTI .....	† 1st and 16th of the month .....
ST. HELENA .....	Occasionally .....
ST. JAGO .....	2nd and 17th of each month .....
SANDWICH ISLANDS .....	Occasionally .....
SARAWAK ISLAND .....	Occasionally .....
	† 3rd and 20th morning of each month • 7th and 24th of each month .....
SARDINIA .....	Daily .....
SAXE ALTENBURGH .....	Daily .....
	Daily .....
SAXE COBURG GOTHA .....	Wednesday and Saturday ..... } Tuesday and Friday ..... }
	Daily .....
	Tuesday and Friday .....
SAXE MEINENGEN .....	Wednesday and Saturday .....
	Daily .....
SAXE MEINENGEN .....	Daily .....
	Tuesday and Friday ..... } Wednesday and Saturday .....



*Newspapers can be sent, distinguishing places where postage is optional can be sent free.*

By what Routes Letters can be sent.	Postage, optional or otherwise.	Weights allowed to pass by each country, and the Postage, if prepaid, for the single rate.		Newspapers.
		Under	s. d.	
Via Holland and Hamburg .....	Optional	$\frac{1}{2}$ oz.—	1 0	Free
Via France .....	Optional	$\frac{1}{4}$ oz.—	0 10	2d.
☞ Via Belgium...	Optional	$\frac{1}{2}$ oz.—	1 4	Free
Via France .....	Optional	$\frac{1}{4}$ oz.—	1 3	2d.
Via Holland and Hamburg .....	Optional	$\frac{1}{4}$ oz.—	1 4	Free
Via French Packet	Must be Unpaid			2d.
Via France .....	Must be paid to Calais or the frontier town	$\frac{1}{2}$ oz.—	0 5	2d.
		$\frac{1}{4}$ oz.—	1 7	2d.
☞ Via Hamburg	Optional	$\frac{1}{4}$ oz.—	1 7	Free
Via Belgium .....	Optional	$\frac{1}{4}$ oz.—	1 7	Free
Via France .....	Optional	$\frac{1}{4}$ oz.—	1 6	2d.
☞ Via Prussia ...	Optional	$\frac{1}{4}$ oz.—	1 7	Free
Via France .....	Optional	$\frac{1}{4}$ oz.—	1 6	2d.
Via Southampton...	Must be Prepaid	$\frac{1}{2}$ oz.—	1 5	Free
Per Ship .....	Must be Prepaid	$\frac{1}{2}$ oz.—	0 8	1d.
Via Southampton...	Must be Prepaid	$\frac{1}{2}$ oz.—	2 3	2d.
Per Ship .....	Must be Prepaid	$\frac{1}{2}$ oz.—	0 8	1d.
Per Ship .....	Must be Prepaid	$\frac{1}{2}$ oz.—	0 8	2d.
Via Southampton...	Optional	$\frac{1}{2}$ oz.—	1 4	4d.
Via Marseilles.....	Must be Prepaid	$\frac{1}{4}$ oz.—	2 2	5d.
Via France .....	Must be Prepaid	$\frac{1}{4}$ oz.—	0 10	2d.
☞ Via Prussia ...	Optional	$\frac{1}{4}$ oz.—	1 4	Free
Via France .....	Optional	$\frac{1}{4}$ oz.—	1 3	2d.
Via Holland and Hamburg .....	Optional	$\frac{1}{4}$ oz.—	1 4	Free
☞ Via Belgium...	Optional	$\frac{1}{4}$ oz.—	1 4	Free
Via Hamburg .....	Optional	$\frac{1}{4}$ oz.—	1 4	Free
Via Holland .....	Optional	$\frac{1}{2}$ oz.—	1 4	Free
Via France ... ..	Optional	$\frac{1}{4}$ oz.—	1 3	2d.
☞ Via Belgium...	Optional	$\frac{1}{4}$ oz.—	1 4	Free
Via France .....	Optional	$\frac{1}{4}$ oz.—	1 3	2d.
Via Holland and Holland .....	Optional	$\frac{1}{4}$ oz.—	1 4	Free

# MAILS TO ALL PARTS

*Time of despatch from London, and various Routes, by which Letters and  
and to where Newspapers*

Countries, Cities, Kingdoms, & States.	Dates and Days when Mails are made up in London.
SAXE WEIMER .....	Daily ..... Wednesday and Saturday ..... } Tuesday and Friday ..... }
SCHAUMBERG LIPPE .....	Daily ..... Daily ..... Wednesday and Saturday .....
SCHWARTZBURG Rudolstadt ...	Tuesday and Friday ..... Daily ..... Tuesday and Friday ..... Wednesday and Saturday .....
SCHWARTZBURG Sonderhausen...	Daily ..... Daily ..... Daily ..... Tuesday and Friday ..... Wednesday and Saturday .....
SIBERIA .....	Daily ..... Tuesday and Friday ..... Wednesday and Saturday .....
SICILIES, TWO .....	7th, 17th and 27th of the month ..... Daily .....
SIERRA LEONE .....	Occasionally .....
SILESIA .....	Daily ..... Daily ..... Tuesday and Friday .....
SINGAPORE .....	† Mornings 3rd and 20th of every month • 7th and 24th of each month .....
SMYRNA .....	7th, 17th and 27th of every month .....
SOCIETY ISLANDS .....	Occasionally .....
SOUTH AUSTRALIA .....	Occasionally ..... • Last day of each month ..... † 3rd and 20th of every month ..... • 7th and 24th of each month .....
SPAIN .....	• Morn. 7th 17th and 27th of each month Daily .....

# OF THE WORLD.

*Newspapers can be sent, distinguishing places where postage is optional can be sent free.*

By what Routes Letters can be sent.	Postage, optional or otherwise.	Weights allowed to pass by each country, and the Postage, if prepaid, for the single rate.		Newspapers.
		Under	s. d.	
☛ Via Belgium...	Optional	$\frac{1}{4}$ oz.—1	4	Free
Via Holland and Hamburg .....	Optional	$\frac{1}{4}$ oz.—1	4	Free
Via France .....	Optional	$\frac{1}{4}$ oz.—1	3	2d.
☛ Via Belgium...	Optional	$\frac{1}{4}$ oz.—1	4	Free
Via France .....	Optional	$\frac{1}{4}$ oz.—1	3	2d.
Via Holland .....	Optional	$\frac{1}{4}$ oz.—1	4	Free
Via Hamburg .....	Optional	$\frac{1}{4}$ oz.—1	4	Free
☛ Via Belgium...	Optional	$\frac{1}{4}$ oz.—1	4	Free
Via Hamburg .....	Optional	$\frac{1}{4}$ oz.—1	4	Free
Via Holland .....	Optional	$\frac{1}{4}$ oz.—1	4	Free
Via France .....	Optional	$\frac{1}{4}$ oz.—1	3	2d.
☛ Via Belgium...	Optional	$\frac{1}{4}$ oz.—1	4	Free
Via France .....	Optional	$\frac{1}{4}$ oz.—1	3	2d.
Via Hamburg .....	Optional	$\frac{1}{4}$ oz.—1	4	Free
Via Holland.....	Optional	$\frac{1}{4}$ oz.—1	4	Free
☛ Via Prussia ...	Optional	$\frac{1}{2}$ oz.—1	7	Free
Via Hamburg .....	Optional	$\frac{1}{2}$ oz.—1	7	Free
Via Holland .....	Optional	$\frac{1}{2}$ oz.—1	7	Free
Via French Packet	Unpaid	Cannot be Paid		2d.
☛ Via France ...	Can be pd to Calais 5d	or the Frontier 1s. 3d.		2d.
Per Ship .....	Must be Prepaid	$\frac{1}{2}$ oz.—0	8	1d.
☛ Via France ...	Optional	$\frac{1}{4}$ oz.—1	5	2d.
Via Belgium .....	Optional	$\frac{1}{4}$ oz.—1	8	Free
Via Hamburg .....	Optional	$\frac{1}{4}$ oz.—1	3	Free
Via Southampton...	Optional	$\frac{1}{2}$ oz.—1	0	Free
☛ Via Marseilles	Must be Prepaid	$\frac{1}{4}$ oz.—1	10	3d.
Per French Packet	Optional	$\frac{1}{4}$ oz.—1	3	2d.
Per Ship .....	Must be Prepaid	$\frac{1}{2}$ oz.—0	8	1d.
Per Ship .....	Must be Prepaid	$\frac{1}{2}$ oz.—0	8	1d.
☛ Via Packet ...	Must be Prepaid	$\frac{1}{2}$ oz.—1	0	Free
Via Southampton...	Must be Prepaid	$\frac{1}{2}$ oz.—1	4	2d.
Via Marseilles .....	Must be Prepaid	$\frac{1}{4}$ oz.—2	2	5d.
Via Southampton...	Must be Prepaid	$\frac{1}{4}$ oz.—2	2	Free
Via France .....	Must be Prepaid	$\frac{1}{4}$ oz.—0	10	$\frac{1}{2}$ d.

# MAILS TO ALL PARTS

*Time of despatch from London, and various Routes, by which Letters and  
and to where Newspapers*

Countries, Cities, Kingdoms, & States.	Days and Dates when Mails are made up in London.
STYRIA .....	Daily .....
SUMATRA .....	Daily .....
SWAN RIVER, AUSTRALIA ...	Occasionally .....
	3rd and 20th of the month .....
	7th and 24th of the month .....
SWEDEN .....	Occasionally .....
	† Last day of every month .....
	† 3rd and 20th of every month .....
	* 7th and 24th of every month .....
SWITZERLAND .....	Daily .....
SYDNEY .....	Tuesday and Friday .....
	Daily .....
	Daily .....
	† Last day of every month .....
	Occasionally .....
	† 3rd and 20th of every month .....
	* 7th and 24th of every month .....
SYRA, GREECE .....	7th, 17th and 27th of the month .....
	†3rd and 20th of every month .....
SYRIA .....	*7th and 24th of every month .....
	†3rd and 20th of every month .....
	7th, 17th and 27th of every month .....
TEXAS .....	3rd and 18th of every month except Jan., Feb., March and Dec. then 3rd only
TRANSYLVANIA .....	Daily .....
	Daily .....
	Tuesday and Friday .....
TUNIS .....	Occasionally .....
TURKEY (in Europe) .....	Daily .....
TURKEY (Asiatic) .....	7th and 24th of every month .....
TUSCANY .....	Daily .....
	7th, 17th and 27th of the month .....
TYROL .....	Daily .....
	Daily .....
	Tuesday and Friday .....

# OF THE WORLD.

*Newspapers can be sent, distinguishing places where postage is optional can be sent free.*



By what Routes Letters can be sent.	Postage, optional or otherwise.	Weight allowed to pass by each country, and the Postage, if prepaid, for the single rate.		Newspapers.
		Under	s. s.	
☞ Via France ...	Optional	$\frac{1}{2}$ oz.—1	5	2d.
Via Belgium .....	Optional	$\frac{1}{4}$ oz.—1	8	Free
☞ Per Ship .....	Must be Prepaid	$\frac{1}{4}$ oz.—0	8	2d.
Via Southampton...	Must be Prepaid	$\frac{1}{2}$ oz.—1	4	4d.
Via Marseilles .....	Must be Prepaid	$\frac{1}{4}$ oz.—2	2	5d.
Per Ship .....	Must be Prepaid	$\frac{1}{2}$ oz.—0	8	1d.
☞ Per Sydney Pkt	Must be Prepaid	$\frac{1}{2}$ oz.—1	0	Free
Via Southampton...	Must be Prepaid	$\frac{1}{2}$ oz.—1	4	2d.
Via Marseilles .....	Must be Prepaid	$\frac{1}{4}$ oz.—2	2	5d.
☞ Via Prussia ...	Optional	$\frac{1}{4}$ oz.—1	10	Free
Via Hamburg .....	Optional	$\frac{1}{4}$ oz.—1	10	Free
Via France .....	Optional	$\frac{1}{4}$ oz.—1	8	2d.
Via France .....	Optional	$\frac{1}{2}$ oz.—0	11	2d.
☞ Per Packet ...	Must be Prepaid	$\frac{1}{2}$ oz.—1	0	Free
Per Ship .....	Must be Prepaid	$\frac{1}{2}$ oz.—0	8	1d.
Via Southampton...	Must be Prepaid	$\frac{1}{2}$ oz.—1	4	2d.
Via Marseilles .....	Must be Prepaid	$\frac{1}{4}$ oz.—2	2	5d.
Via French Packet	Optional	$\frac{1}{4}$ oz.—1	5	1d.
Via Southampton...	Must be Prepaid	$\frac{1}{2}$ oz.—1	6	Free
☞ Via Marseilles	Must be Prepaid	$\frac{1}{4}$ oz.—1	8	3d.
Via Southampton...	Must be Prepaid	$\frac{1}{2}$ oz.—1	6	2d.
Via French Packet	Must be Prepaid	$\frac{1}{4}$ oz.—1	5	2d.
Per Packet .....	Must be Prepaid	$\frac{1}{2}$ oz.—1	0	2d.
Via Belgium .....	Optional	$\frac{1}{4}$ oz.—1	8	Free
☞ Via France ...	Optional	$\frac{1}{4}$ oz.—1	5	2d.
Via Hamburg .....	Optional	$\frac{1}{4}$ oz.—1	7	Free
Per Ship .....	Must be Prepaid	$\frac{1}{2}$ oz.—0	8	1d.
Via France .....	Optional	$\frac{1}{4}$ oz.—1	11	2d.
Via Marseilles .....	Must be Prepaid	$\frac{1}{4}$ oz.—1	8	2d.
Via France .....	Must be Prepaid	$\frac{1}{4}$ oz.—0	10	2d.
Via French Packet	Optional	$\frac{1}{4}$ oz.—1	9	2d.
☞ Via France ...	Optional	$\frac{1}{4}$ oz.—1	5	2d.
Via Belgium .....	Optional	$\frac{1}{4}$ oz.—1	8	Free
Via Hamburg .....	Optional	$\frac{1}{4}$ oz.—1	7	Free

**MAILS TO ALL PARTS**

*Time of despatch from London, and various routes by which Letters and  
and to where Newspapers*

Countries, Cities, Kingdoms, & States.	Dates and Days when Mails are made up in London.
UNITED STATES .....	3rd and 18th of the month, except Jan., Feb, March and Dec., then 3rd only..
VAN DIEMAN'S LAND .....	Occasionally .....
VENEZUELA .....	Occasionally .....
WEST INDIES (British Possessions)	† Last day of every month .....
WEST INDIA ISLANDS .....	3rd and 20th of every month .....
" (belonging to other countries.)	• 7th and 24th of every month .....
WURTEMBERG .....	† 2nd, morning and 17th of every month
	Occasionally .....
	† 2nd and 17th of the month .....
	† 2d, morn. mail, & 17th of every month
	Daily .....
	Daily .....

*Newspapers can be sent, distinguishing places where postage is optional can be sent free.*

By what Routes Letters can be sent.	Postage, optional or otherwise.	Weights allowed to pass by each country, and the Postage, if prepaid, for the single rate.		Newspapers
		Under	s. d.	
Via Liverpool .....	Must be Prepaid	$\frac{1}{2}$ oz.—	1 0	2d.
Per Ship .....	Must be Prepaid	$\frac{1}{2}$ oz.—	0 8	1d.
Per Ship .....	Must be Prepaid	$\frac{3}{4}$ oz.—	0 8	1d.
 Per Sydney Pkt.	Must be Prepaid	$\frac{1}{2}$ oz.—	1 0	Free
Via Southampton...	Must be Prepaid	$\frac{1}{2}$ oz.—	1 4	2d.
Via Marseilles.....	Must be Prepaid	$\frac{1}{2}$ oz.—	2 2	5d.
Via Southampton...	Must be Prepaid	$\frac{1}{2}$ oz.—	1 0	Free
Per Ship .....	Must be Prepaid	$\frac{1}{2}$ oz.—	0 8	1d.
Via Southampton...	Optional	$\frac{1}{2}$ oz.—	1 0	Free
Via Southampton...	Optional	$\frac{1}{2}$ oz.—	1 2	Free
Via Southampton...	Must be Prepaid	$\frac{1}{2}$ oz.—	1 5	2d.
 Via France ...	Optional	$\frac{1}{2}$ oz.—	1 3	2d.
Via Belgium .....	Optional	$\frac{1}{2}$ oz.—	1 6	Free











